



4,000 lb. - 6,000 lb.



SPECIFICATIONS

Suspension: Features an independent suspension cushioned with rubber, providing a smooth, quiet ride with no transfer of road shock from one wheel to the other. (No springs required)

Bolt Pattern Options:

- 6 on 5 1/2" • 8 on 6 1/2"
- UTG 5-Spoke, for 14.5" wheels

Brake Options:

With or without parking feature.

- 12 x 2" Electric
- 12 x 2" Hydraulic (Uni-Servo, Freebacking and Duo-Servo)
- Hydraulic Disc: 6 on 5 1/2" only

Spindles:

TTA (#42 Spindle w/2 1/4" seal journal)
25580 Inner, LM67048, 15123, or 14125A Outer Bearings

Lubrication: • Grease • E-Z Lube

- Oil Bath • Nev-R-Lube

Wheel Assemblies: See Section E

Replacement Parts:

Idler Hub: See Page B-15 and B-16

Hub/Drums: See Page B-22 - B-24
B-34(Nev-R-Lube)

Hub/Rotor: See Page B-36

Brakes: See Page C-11 (Electric),
Page C-27 & 28
(Hydraulic Drum),
Page B-36 (Hydraulic Disc)

Axle Beams: See Page B-3

#11 Torflex Axle Assemblies

Axle Type	6 on 5 1/2"	8 on 6 1/2"	UTG 5-SPOKE
Idler			
Std Grease	11TF60-655I	11TF60-865I	11TF60-UTGI
w/ E-Z Lube	11TF60-655I-EZ	11TF60-865I-EZ	11TF60-UTGI-EZ
w/ Oil Bath	N/A	11TF60-865I-OIL	11TF60-UTOI-OIL
Electric			
Std Grease	11TF60-655E	11TF60-865E	11TF60-UTGE
w/ E-Z Lube	11TF60-655E-EZ	11TF60-865E-EZ	11TF60-UTGE-EZ
w/ Nev-R-Lube	11TF60-655E-NL	11TF60-865E-NL	N/A
w/ Oil Bath	N/A	11TF60-865E-OIL	11TF60-UTOE-OIL
Single Servo Hydraulic			
Std Grease	11TF60-655H	11TF60-865H	11TF60-UTGH
w/ E-Z Lube	11TF60-655H-EZ	11TF60-865H-EZ	11TF60-UTGH-EZ
w/ Nev-R-Lube	11TF60-655H-NL	11TF60-865H-NL	N/A
w/ Oil Bath	N/A	11TF60-865H-OIL	11TF60-UTOH-OIL
Single Servo Hydraulic Freeback			
Std Grease	11TF60655HFB	11TF60865HFB	11TF60-UTGHFB
w/ E-Z Lube	11TF60655HFBEZ	11TF60865HFBEZ	11TF60UTGHFBEZ
w/ Nev-R-Lube	11TF60655HFBNL	11TF60865HFBNL	N/A
w/ Oil Bath	N/A	11TF60-865HFBOIL	11TF60-UTOHFBOIL
Duo-Servo Hydraulic			
Std Grease	11TF60-655HY	11TF60-865HY	11TF60-UTGHY
w/ E-Z Lube	11TF60-655HY-EZ	11TF60-865HY-EZ	11TF60-UTGHY-EZ
w/ Nev-R-Lube	11TF60-655HY-NL	11TF60-865HY-NL	N/A
w/ Oil Bath	N/A	11TF60-865HYOIL	11TF60-UTOHYOIL
Hydraulic Disc			
Std Grease	11TF60-655DS	N/A	N/A
w/ E-Z Lube	11TF60-655DS-EZ	N/A	N/A
w/ Nev-R-Lube	11TF60-655DS-NL	N/A	N/A
w/ Oil Bath	N/A	N/A	N/A

#11 Torflex Mounting Kit & Axle Options

Part No.	Ref. No.	Type
XTRA-HF-11TF	060150	EXTRA CHARGE (PER AXLE) FOR AXLES OVER 96" HUB FACE
11TF-PWC	060160	EXTRA CHARGE FOR #11 TORFLEX ELECTRIC W/ PWC OPTION INSTALLED
AP167	060190	WELD ON MOUNTING BRACKET KIT FOR #11 TORFLEX AXLE

For information on ordering and installing Torflex axles, see pages A-25 thru A-27.

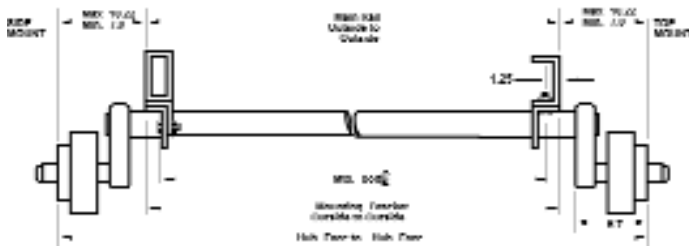
For specific ordering information, please call your nearest Branch.

#11 TORFLEX SPECIFICATIONS



AXLE
ASSEMBLIES

MOUNTING DETAILS



Difference between hubface and outside mounting bracket

Minimum
14.00" (7" per side)/Disc=15.00" (7.5" per side)

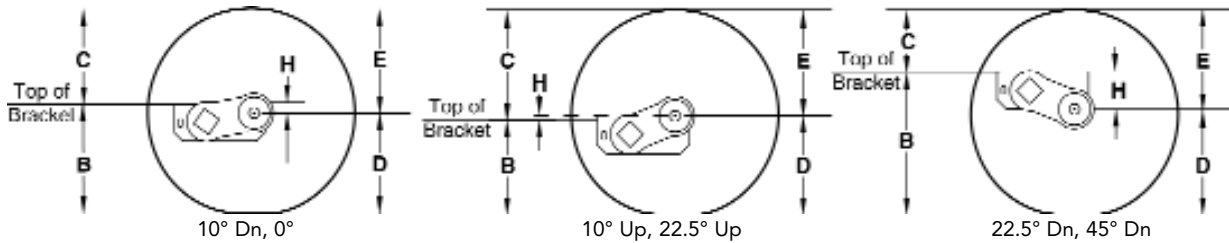
Maximum
5200 lb. - 23.60" (11.8 per side)
6000 lb. - 20.45" (10.22 per side)

Note: Minimums are based on manufacturing tolerances only. Some tire and wheel combinations may create interference.



Full Load Dimensions

Dimensions are for low profile, top mount only. High profile brackets are .75" higher. Side mount is .25" higher. Allow 3" bump clearance from full load.



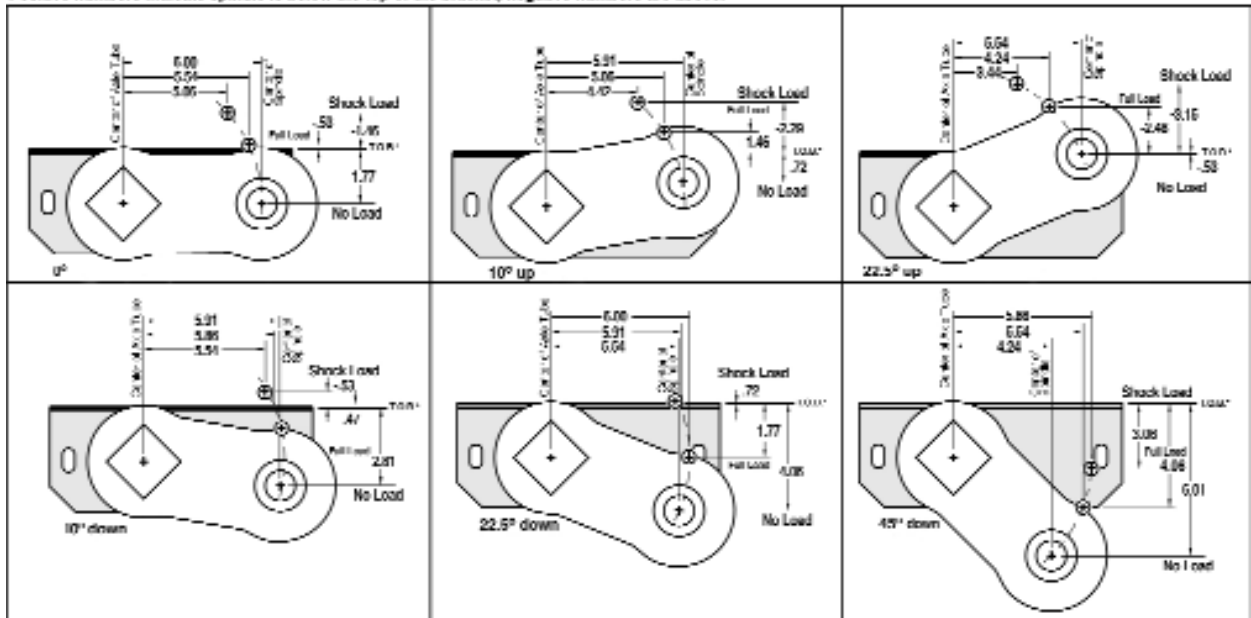
H = Center Line of spindle to top of bracket, B = Top of bracket to ground, C = Top of bracket to top of tire, D = Center Line of spindle to ground, E = Center Line of spindle to top of tire.

Tire	Start Angle																			
	45° Down			22.5° Down			10° Down			0°			10° Up			22.5° Up				
	H	B	C	H	B	C	H	B	C	H	B	C	H	B	C	H	B	C	D	E
ST225/75R15	4.1	17.1	10.3	1.8	14.8	12.6	0.5	13.5	13.9	-0.5	12.5	14.9	-1.5	11.5	15.9	-2.5	10.5	16.9	13.0	14.4
LT235/85R16	4.1	18.4	11.3	1.8	16.1	13.6	0.5	14.8	14.9	-0.5	13.8	15.9	-1.5	12.8	16.9	-2.5	11.8	17.9	14.3	15.4
LT225/75R16	4.1	17.6	10.8	1.8	15.3	13.1	0.5	14.0	14.4	-0.5	13.0	15.4	-1.5	12.0	16.4	-2.5	11.0	17.4	13.5	14.9
8.75R16.5 LT	4.1	17.9	10.7	1.8	15.6	13.0	0.5	14.3	14.3	-0.5	13.3	15.3	-1.5	12.3	16.3	-2.5	11.3	17.3	13.8	14.8

ARTICULATION DIMENSIONS

ALLOW 3" BUMP CLEARANCE FROM FULL LOAD.

Positive numbers indicate spindle is below the top of the bracket, negative numbers are above.





SPECIFICATIONS

Suspension: Features an independent suspension cushioned with rubber, providing a smooth, quiet ride with no transfer of road shock from one wheel to the other. (No springs required)

Bolt Pattern Options:

- #12 • 8 on 6 1/2" • UTG 5-Spoke
- #12V • 8 on 6 1/2" (9/16" Studs Standard or optional 5/8")

Brake Options:

- #12 • With or without parking feature.
 - 12 x 2 " Electric
 - 12 x 2 " Hydraulic (Uni-Servo, Freebacking and Duo-Servo)
- #12V • 12 1/4" x 2 1/2" Electric Only

Spindles:

- #12 • UTA (#42 Spindle w/2 1/4" seal journal) 25580 Inner, LM67048, 15123, or 14125A Outer Bearings
- #12V • 25580 Inner, 02475 Outer Bearings

Lubrication:

- #12 • Grease • E-Z Lube • Oil Bath • Nev-R-Lube
- #12V • Grease • E-Z Lube • Oil Bath

Wheel Assemblies: See Section E

Replacement Parts:

- Idler Hub:** #12 - See Page B-16
#12V -N/A
- Hub/Drums:**#12 - See Page B-24, B-34 (Nev-R-Lube)
#12V -See Page B-25
- Brakes:** #12 - See Page C-11 (Electric),
Page C-27 & C-28 (Hydraulic)
#12V -See Page C-14 (Electric)
- Axle Beams:** #12 & #12V - See Page B-3

#12 Torflex Axle Assemblies - 7,000 lb

Axle Type:	8 on 6 1/2"	UTG 5-SPOKE
Idler		
Std Grease	12TF70-865I	12TF70-UTGI
w/ E-Z Lube	12TF70-865I-EZ	12TF70-UTGI-EZ
w/ Oil Bath	12TF70-865I-OIL	12TF70-UTOI-OIL
Electric		
Std Grease	12TF70-865E	12TF70-UTGE
w/ E-Z Lube	12TF70-865E-EZ	12TF70-UTGE-EZ
w/ Nev-R-Lube	12TF70-865E-NL	N/A
w/ Oil Bath	12TF70-865E-OIL	12TF70-UTOE-OIL
Single Servo Hydraulic		
Std Grease	12TF70-865H	12TF70-UTGH
w/ E-Z Lube	12TF70-865H-EZ	12TF70-UTGH-EZ
w/ Nev-R-Lube	12TF70-865H-NL	N/A
W/ Oil Bath	12TF70-865H-OIL	12TF70-UTOH-OIL
Single Servo Hydraulic Freeback		
Std Grease	12TF70-865HFB	12TF70-UTGHFB
w/ E-Z Lube	12TF70-865HFBEZ	12TF70-UTGHFBEZ
w/ Nev-R-Lube	12TF70-865HFBNL	N/A
w/ Oil Bath	12TF70-865HFBOIL	12TF70-UTOHFBOIL
Duo-Servo Hydraulic		
Std Grease	12TF70-865HY	12TF70-UTGHY
w/ E-Z Lube	12TF70-865HY-EZ	12TF70-UTGHY-EZ
w/ Nev-R-Lube	12TF70-865HY-NL	N/A
w/ Oil Bath	12TF70-865HYOIL	12TF70-UTOHYOIL

#12V Torflex Axle Assemblies - 7,200 lb

Axle Type:	8 on 6 1/2"	UTG 5-SPOKE
Electric		
Std Grease	12TF72-865E	N/A
w/ E-Z Lube	12TF72-865E-EZ	N/A
w/ Oil Bath	12TF72-865E-OIL	N/A

#12 & 12V Torflex Mounting Kit & Axle Options

Part No.	Ref. No.	Type
XTRA-HF-12TF	063275	EXTRA CHARGE (PER AXLE) FOR AXLES OVER 96" HUB FACE
12TF-PWC	063280	EXTRA CHARGE FOR #12 TORFLEX ELECTRIC W/ PWC OPTION INSTALLED
AP168	063290	WELD ON MOUNTING BRACKET KIT FOR #12 TORFLEX AXLE

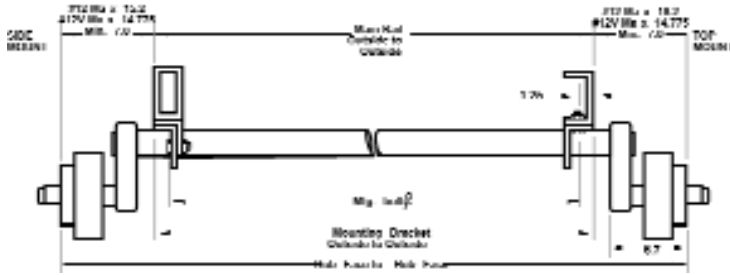
For information on ordering and installing Torflex axles, see pages A-25 thru A-27.
For specific ordering information, please call your nearest Branch.

#12 & #12V TORFLEX SPECIFICATIONS

MOUNTING DETAILS



**AXLE
ASSEMBLIES**



Difference between hubface and outside mounting bracket

Minimum
14.00" (7" per side)

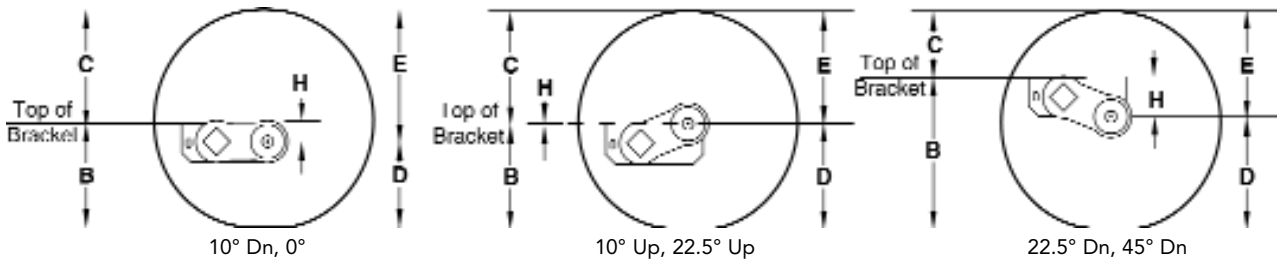
Maximum
#12 - 30.40" (15.2" per side)
#12V - 29.55" (14.775" per side)

Note: Minimums are based on manufacturing tolerances only. Some tire and wheel combinations may create interference.



Full Load Dimensions

Dimensions are for low profile, top mount only. High profile brackets are .75" higher. Side mount is .31" higher. Allow 3" bump clearance from full load.



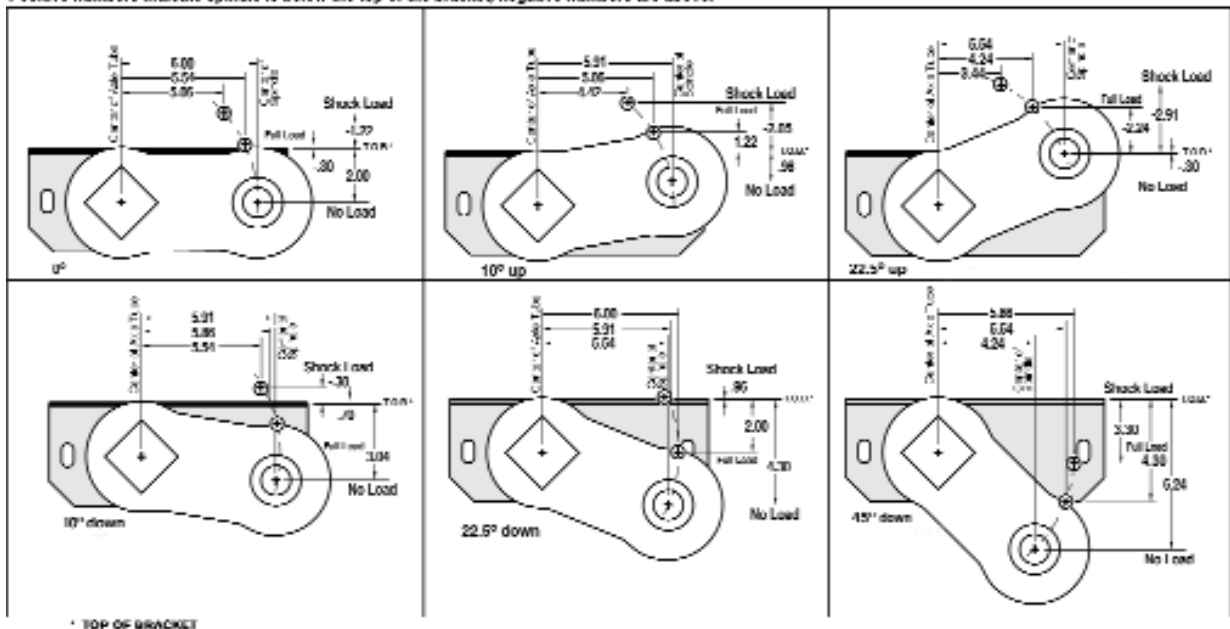
H = Center Line of spindle to top of bracket, **B** = Top of bracket to ground, **C** = Top of bracket to top of tire,
D = Center Line of spindle to ground, **E** = Center Line of spindle to top of tire.

Tire	Start Angle														D	E				
	45° Down			22.5° Down			10° Down			0°			10° Up				22.5° Up			
	H	B	C	H	B	C	H	B	C	H	B	C	H	B			C	H	B	C
LT235/85R16	4.3	18.6	11.1	2.0	16.3	13.4	0.7	15.0	14.7	-0.3	14.0	15.7	-1.2	13.1	16.6	-2.2	12.1	17.6	14.3	15.4
7.50-16LT	4.3	19.2	12.4	2.0	16.9	14.7	0.7	15.6	16.0	-0.3	14.6	17.0	-1.2	13.7	17.9	-2.2	12.7	18.9	14.9	16.7
9.50-16.5LT	4.3	18.4	10.9	2.0	16.1	13.2	0.7	14.8	14.5	-0.3	13.8	15.5	-1.2	12.9	16.4	-2.2	11.9	17.4	14.1	15.2

ARTICULATION DIMENSIONS

ALLOW 3" BUMP CLEARANCE FROM FULL LOAD.

Positive numbers indicate spindle is below the top of the bracket, negative numbers are above.





SPECIFICATIONS

Suspension: Features an independent suspension cushioned with rubber, providing a smooth, quiet ride with no transfer of road shock from one wheel to the other. (No springs required)

Brake Options: (Forward Self-Adjusting)

- 12 1/4 X 3 3/8" Electric
- 12 1/4 X 3 3/8" Hydraulic (Duo-Servo Standard, Optional Uni-Servo) with or without parking feature
- Hydraulic Disc
- ABS Equipped options for hydraulic brakes

Bolt Pattern Options:

- 8 on 6 1/2" (9/16" Studs Standard or Optional 5/8")

Spindles: 25580 Inner, 02475 Outer Bearings

Lubrication: • Oil Bath • E-Z Lube • Nev-R-Lube

Wheel Assemblies: See Section E

Replacement Parts:

Idler Hub: See Page B-17

Hub/Drums: See Page B-27, B-34 (Nev-R-Lube)

Hub/Rotor: See Page B-38

Brakes: See Page C-15 (Electric),
Page C-29 (Hydraulic Drum),
Page B-38 (Hydraulic Disc)

Axle Beams: See Page B-3

#13 Torflex Axle Assemblies

Axle Type	8 on 6 1/2"
Idler Oil Bath	13TF80-865I
Idler w/ E-Z Lube	13TF80-865I-EZ
Electric Oil Bath	13TF80-865E
Electric w/ E-Z Lube	13TF80-865E-EZ
Electric w/ Nev-R-Lube	13TF80-865E-NL
Duo-Servo Hydraulic, Oil Bath	13TF80-865HY
Duo-Servo Hydraulic w/ E-Z Lube	13TF80-865HY-EZ
Duo-Servo Hydraulic w/ Nev-R-Lube	13TF80-865HY-NL
Hydraulic Disc Oil Bath	13TF80-865DS
Hydraulic Disc w/ EZ Lube	13TF80-865DS-EZ
Hydraulic Disc w/ Nev-R-Lube	13TF80-865DS-NL

#13 Torflex Mounting Kit & Axle Options

Part No.	Ref. No.	Type
XTRA-HF-13TF	064625	EXTRA CHARGE (PER AXLE) FOR AXLES OVER 96" HUB FACE
13TF-HYD-PARK	064800	HYDRAULIC BRAKES W/ PARK, ADD TO #13 TORFLEX HYDRAULIC BRAKE AXLE PRICE
13TF-PWC	064850	EXTRA CHARGE FOR #13 TORFLEX ELECTRIC W/ PWC OPTION INSTALLED
13TF-ADD-HYABS	064860	EXTRA CHARGE (PER AXLE) FOR HYDRAULIC BRAKE AXLES W/ ABS SENSORS & TONE RINGS INSTALLED
AP169	064900	WELD ON MOUNTING BRACKET KIT FOR #13 TORFLEX AXLES

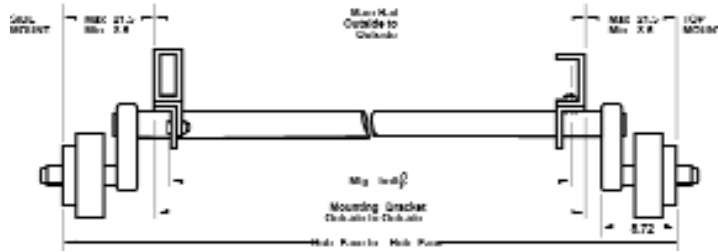
For information on ordering and installing Torflex axles, see pages A-25 thru A-27.
For specific ordering information, please call your nearest Branch.

#13 TORFLEX SPECIFICATIONS

MOUNTING DETAILS



AXLE
ASSEMBLIES



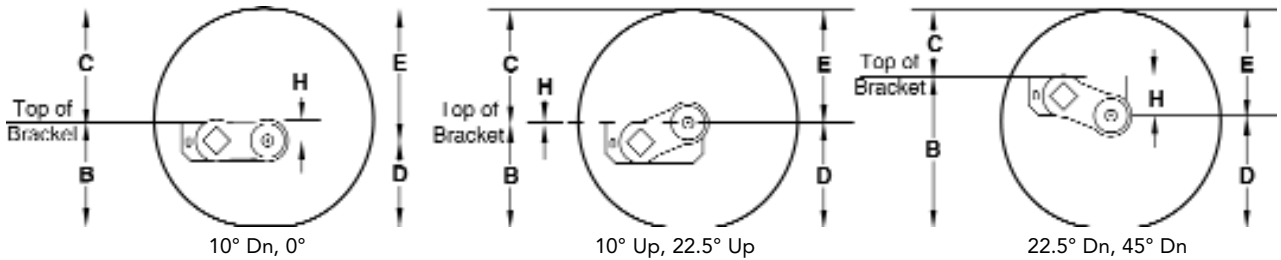
Difference between hub face and outside mounting bracket

- Minimum**
17.00" (8.5" per side)
- Maximum**
43.00" (21.5" per side)

Note: Minimums are based on manufacturing tolerances only.
Some tire and wheel combinations may create interference.

13 Full Load Dimensions

Dimensions are for low profile, top mount only. High profile brackets are .75" higher. Side mount is .31" higher. Allow 3" bump clearance from full load.

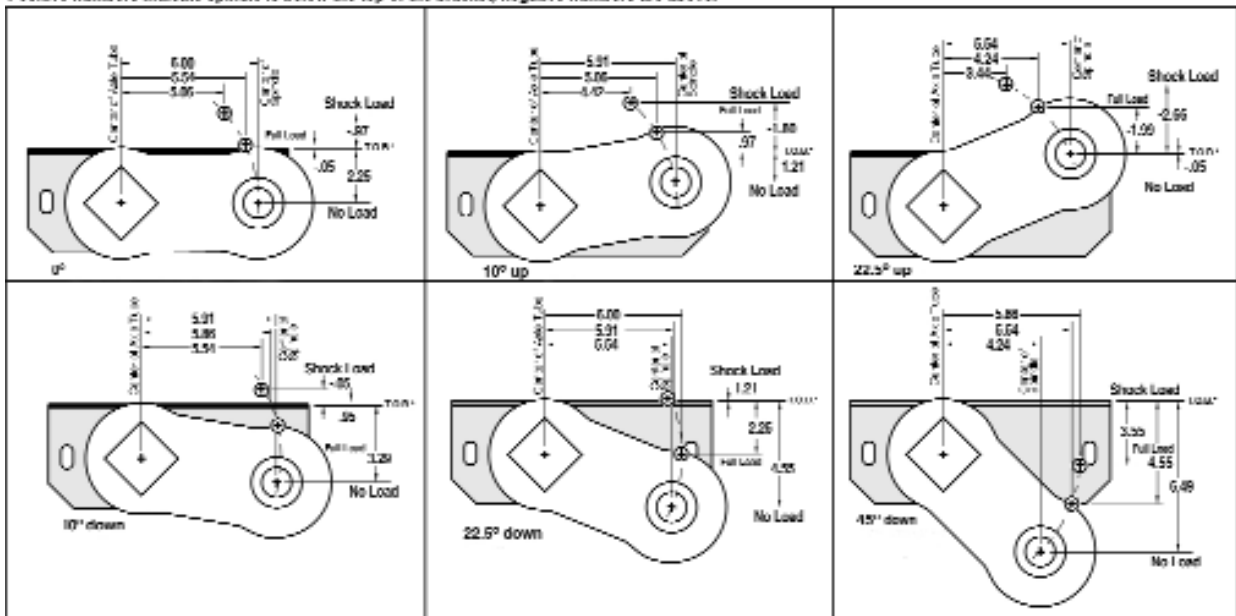


H = Center Line of spindle to top of bracket, B = Top of bracket to ground, C = Top of bracket to top of tire, D = Center Line of spindle to ground, E = Center Line of spindle to top of tire.

Tire	Start Angle												D	E						
	45° Down			22.5° Down			10° Down			0°					10° Up			22.5° Up		
	H	B	C	H	B	C	H	B	C	H	B	C			H	B	C	H	B	C
10R17.5 HC	4.6	20.2	13.4	2.3	17.9	15.7	1.0	16.6	17.0	-0.1	15.5	18.1	-1.0	14.6	19.0	-2.0	13.6	20.0	15.6	18.0
215/75R 17.5	4.6	18.6	10.7	2.3	16.3	13.0	1.0	15.0	14.3	-0.1	13.9	15.4	-1.0	13.0	16.3	-2.0	12.0	17.3	14.0	15.3
12-16.5 LT	4.6	19.5	11.2	2.3	17.2	13.5	1.0	15.9	14.8	-0.1	14.8	15.9	-1.0	13.9	16.8	-2.0	12.9	17.8	14.9	15.8
9.50-16.5 LT	4.6	18.7	10.6	2.3	16.4	12.9	1.0	15.1	14.2	-0.1	14.0	15.3	-1.0	13.1	16.2	-2.0	12.1	17.2	14.1	15.2
9R 17.5 HC	4.6	20.0	12.5	2.3	17.7	14.8	1.0	16.4	16.1	-0.1	15.3	17.2	-1.0	14.4	18.1	-2.0	13.4	19.1	15.4	17.1

ARTICULATION DIMENSIONS

ALLOW 3" BUMP CLEARANCE FROM FULL LOAD.
Positive numbers indicate spindle is below the top of the bracket, negative numbers are above.



* TOP OF BRACKET